



# PointWrite User Manual

PW31U

V1.00

# Table of contents

**Shipping Contents..... 3**

**Prepare for Setup ..... 4**

Environmental Condition ..... 4

Instructions for Surface ..... 5

## **PointWrite Module**

### **Installation on**

**Projector ..... 7**

### **About PointWrite**

**Pen..... 8**

Installing the Batteries..... 8

Replacing the Pen Tip..... 8

### **Setup Software**

**Installation ..... 9**

### **Setup Software**

#### **Installation**

**Complete ..... 10**

### **Connecting the**

**PointWrite to PC..... 11**

### **Set up for Interactive**

**Function ..... 12**

Configuration Setting. .... 12

Alignment Instructions..... 13

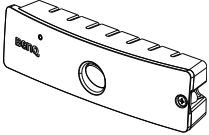


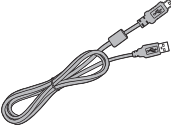
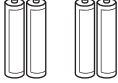

PointWrite Calibration..... 14

Start for Interactive Function..... 15

**Specifications..... 16**

# Shipping Contents

The PointWrite is a built in Interactive Whiteboard on the projector. To use the PointWrite correctly, please find the standard accessories below and follow the instructions in this manual.

1	2	3
		
PointWrite	Quick manual	Two PointWrite pens (PointWrite Pen G2)
4	5	6
		
Mini USB cable	Two sets of batteries	Extra pen tips

1. PointWrite (PW31U): Interactive Whiteboard Sensor.
2. Quick Start Guide: PointWrite easy to use instructions..
3. Two PointWrite Pens (PointWrite Pen G2)<sup>1</sup>: PointWrite Pen is a pen type wireless mouse. Before using the pen, insert the batteries into the pen.
4. Mini USB Cable: Connects the PointWrite to PC.
5. Batteries: AAA size batteries.
6. Extra Pen Tips

---

<sup>1</sup>. PointWrite Pen G2 is only compatible with selected PointWrite modules.

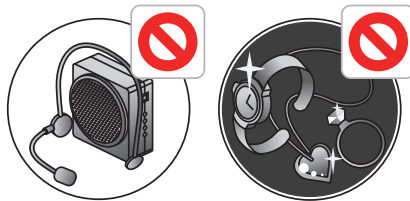
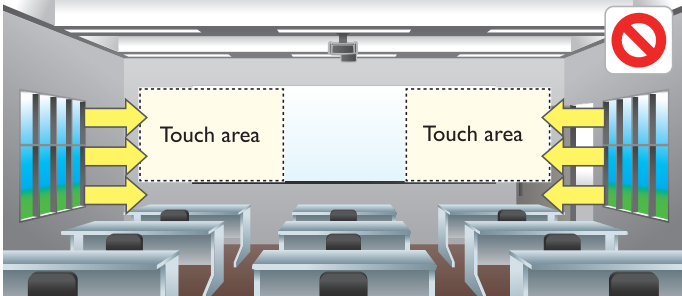
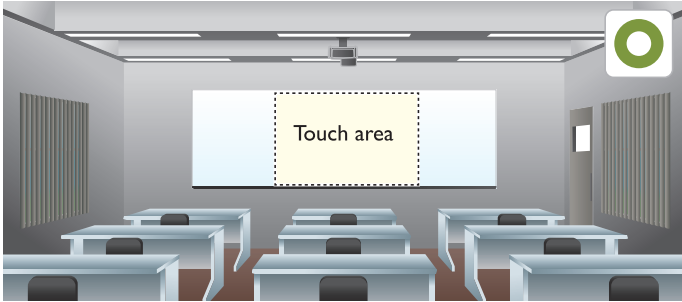
# Prepare for Setup

## Environmental Condition

For an BenQ projector with the scalable interactive functionality, transforming any flat surface into a virtual interactive whiteboard.

For an optimal interactive writing quality, follow these guidelines:

1. Close window curtains.
2. Select a projection area away from direct sunlight to prevent writing interference.
3. Keep infrared devices, such as: infrared microphones, away from the front side of the screen to prevent interference.
4. Remove accessories, such as: watches or necklaces, with a reflective surface to prevent interference.

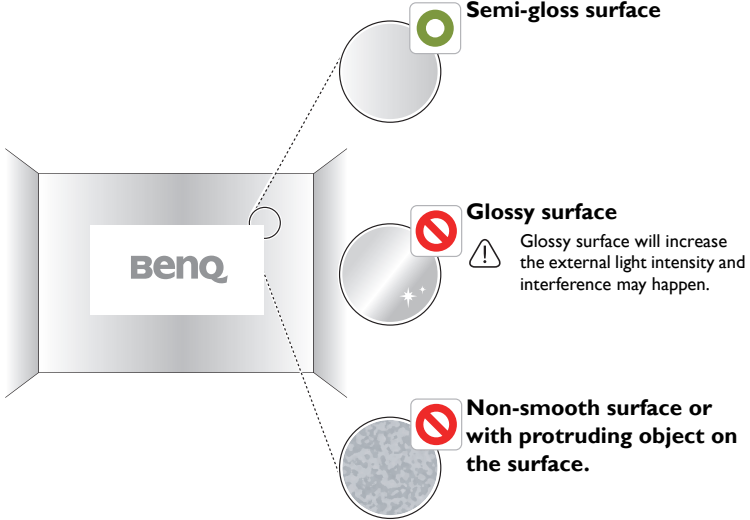


# Instructions for Surface

Optimal interactive quality will be dependent on the selected surface condition. It is important to choose a flat and non-reflective surface to secure the writing performance.

## Selecting a wall surface

- Select a wall that is straight and flat, avoid any protruding objects on it.
- Project on a smooth, semi-gloss painted surface to reduce glare from the projector, to achieve optimal touch quality and to reduce wear on the pen nib.



## Selecting a board surface

Attach a dry-erase board to the wall if you're projecting on a textured wall surface. A dry-erase board is a flat surface that works well with your interactive projector and allows you to write smoothly in digital ink.



## Instructions for a board surface



Consider the following factors when selecting a board to project to optimized the interactive quality.

- The board surface require to be semi-glossy or matt.
- The board with glossy and reflected surface is not recommended, the surface will increase the external light intensity and unexpected interference may happen.



**Caution:** For a existing glossy board, it is recommend to use the projection film to coverage the existing surface to get a better interactive quality.

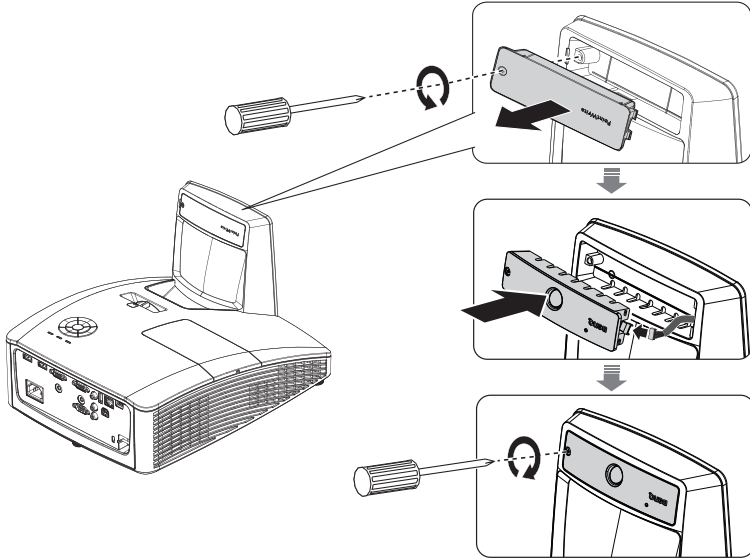
## Comparison of the board surface

Surface	Board material	Performance
Semi glossy/Matt 	Dry erase board	<b>Best!</b> The surface will eliminate reflection intensity.
Glossy 	<ul style="list-style-type: none"><li>• General whiteboard</li><li>• With Galvanized steel</li><li>• With Ceramic steel panel</li></ul>	<b>Risk!</b> Interference may happen during writing.

# PointWrite Module Installation on Projector

Attach the PointWrite to the projector as illustrated and tighten the screw to secure the PointWrite.

1. Remove the cover on the projector as illustrated.
2. Connect the cable to the PointWrite and install the PointWriter as illustrated
3. Tighten the screw to secure the PointWrite.



# About PointWrite Pen

The PointWrite Pen provides the following 4 actions:

**Click:** Touch an icon or a menu on the screen.

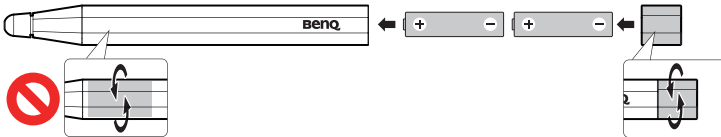
**Double Click:** Touch an icon or a menu on the screen two times.

**Right Button Click:** Touch an icon or menu for at least 1.5 seconds.

**Drag:** Touch and drag an object on the screen.

## Installing the Batteries

 **Caution:** When inserting the batteries into the PointWrite Pen, make sure the battery polarities are correct.

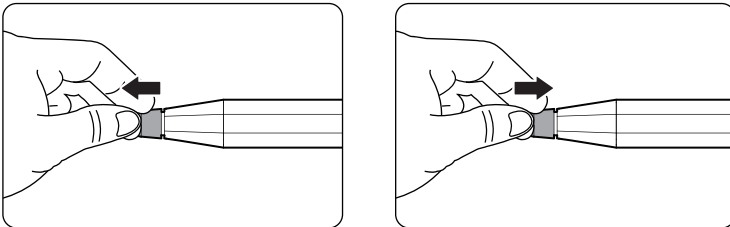


**Remark:**

To save the battery power, the pen will power off automatically when pen nib is pressed over than 30 seconds.

## Replacing the Pen Tip

1. Removing the pen tip  
Hold the pen tip with your fingers. Shake and pull the pen tip out of the pen.
2. Inserting the pen tip  
Push the pen tip gently, but not abruptly.

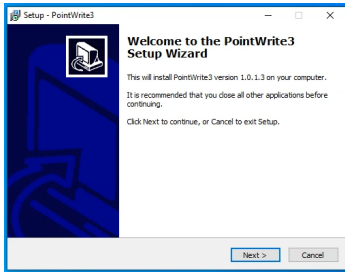




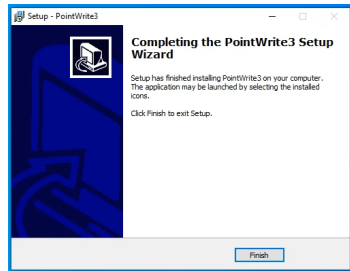
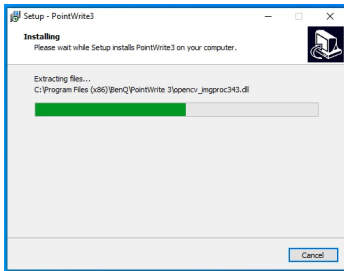
# Setup Software Installation

When you are the first time to use this PointWrite Module, please install set-up Software for Configuration setting.


1. <https://www.benq.com/en-us/business/support/products/projector/pointwrite-pw31u/download.html>  
Go to BenQ Website >> Search PW31U >> Go to “Download Page”.
2. Follow the on-screen instructions to setup software.



3. Complete the installation.



# Setup Software Installation Complete

The PointWrite icon  will be created on the desktop.

The installation folder will be created on C: directory.

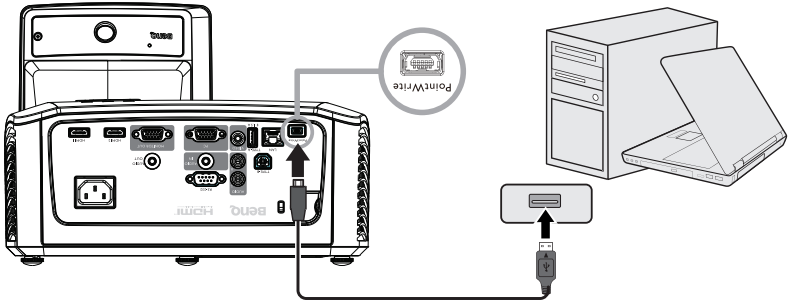
- 64-bit Windows: C:\Program Files (x86)\BenQ\PointWrite 3.0
- 32-bit Windows: C:\Program Files\BenQ\PointWrite 3.0

**Remark:**

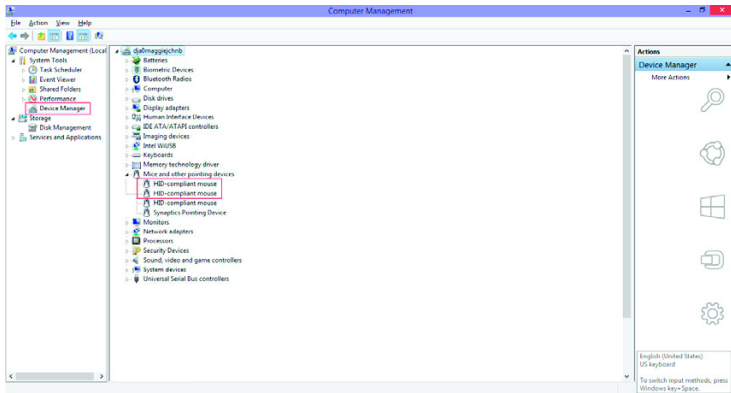
**Only First time using the PointWrite module need to install set-up Software for Configuration setting**, the subsequent users can only plug the USB cable to connect to PC to start the interaction quickly without Setup Software installation.

# Connecting the PointWrite to PC

Use the USB cable<sup>2</sup> to connect the PointWrite to PC. Plug the USB mini-B end into the projector and plug the USB type-A end into PC.



Check "Device Manager" from your computer to make sure that PointWrite device is recognized by your computer.



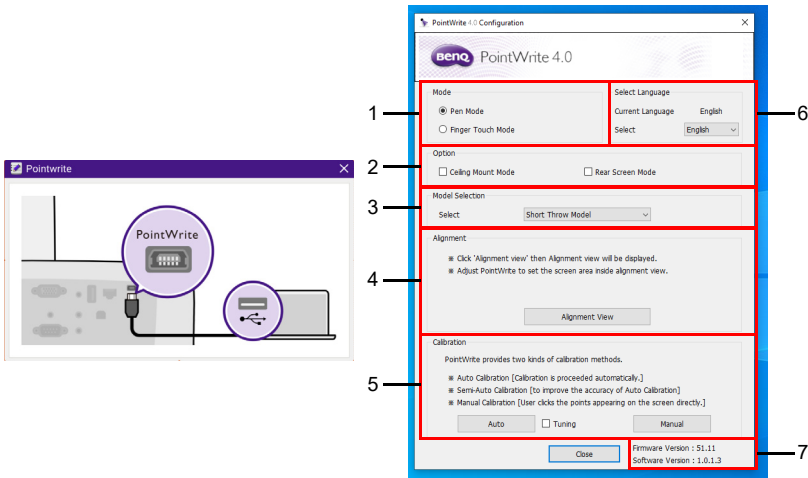
<sup>2</sup>. A USB cable of 5 meters is provided. Use a USB repeater cable If you need to extend the length.

# Set up for Interactive Function

To use the PointWrite, the proper setting of the PointWrite configuration is needed. The Configuration setting window will help you to set up PointWrite correctly.

If PointWrite module is not properly installed in projector, the PointWrite set-up SW cannot be executed. And the connected message will pop up to remind installation status.

## Configuration Setting.

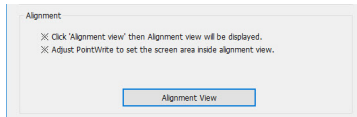


- PointWrite Mode:**
  - Pen Mode:** Default selection
  - Finger Touch Mode:** Only available when PointWrite Module works with BenQ PointWrite Touch module. When selecting Finger Touch mode, pen and finger can be used simultaneously.
- PointWrite Option:**
  - Ceiling Mount Mode:** Click this item if you mount the projector on the ceiling. When the projector is placed on the table, do not click this item.
  - Rear Screen Mode:** If the projector is installed on the rear screen system, click this item.
- Model selection:** Select the projector model.
- PointWrite Alignment:** See "[Alignment View](#)" on page 13.
- PointWrite Calibration:** See "[PointWrite Calibration](#)" on page 14.
- PointWrite Language:** The default language is the same as the language for your operating system. If you want to change the language, click on   and then language list will display. **After selecting your preferred language, quit the PointWrite and start the PointWrite again.**
- Information:** Shows the camera firmware version.

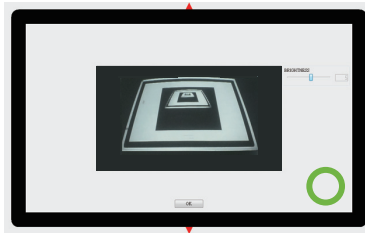
# Alignment Instructions

## Alignment View

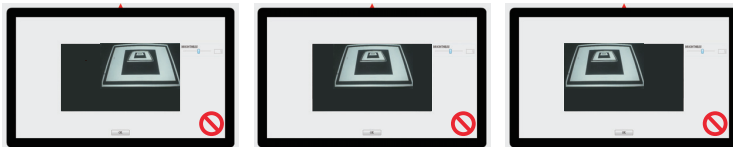
The PointWrite Alignment function is to set the orientation of the PointWrite to the screen.



**Alignment View:** When clicking on the "Alignment View", the screen image is displayed on the alignment view as illustrated.



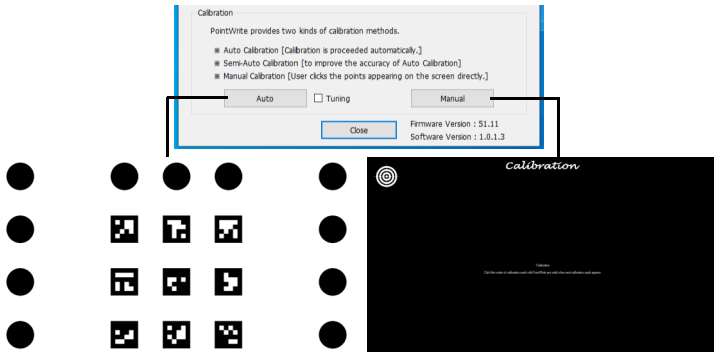
If the screen image is not in the center, the calibration will fail. Please make sure the PointWrite module is attached to the projector properly.



- Right side conflict
- Upper side conflict
- Left side conflict

# PointWrite Calibration

PointWrite provides two kinds of calibration methods: auto calibration and manual calibration.



**Auto calibration:** Click on  and the calibration process will run automatically.

When you choose this method, white image is shown on the screen and the pattern image is displayed.

**Manual calibration:** Click on  and calibration window will be projected on the screen.


**Tuning:** Check "Tuning" and do "Auto calibration" then the "tuning" function become effective.


Under this selection Setup Software starts calibration process like below

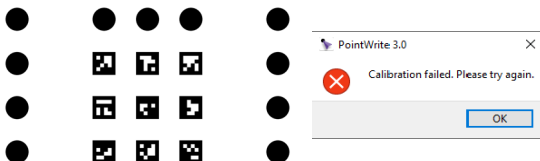
- 1) Run auto calibration
- 2) After finishing auto calibration, manual calibration is run automatically then click manual calibration points

Through these two process, PW31U does auto calibration by referring manual calibration result and gets more precise result.

\* Usage of "Tuning": even though try auto calibration many times, but offset ( pen position to cursor ) appears always.

Use the PointWrite pen to click  on the center of calibration cursor immediately after it appears. Then the next cursor will display. Repeat this process until the last calibration cursor disappears.

 **Caution:** In rare circumstances, auto calibration may fail or accuracy may be low. In this case, please execute the manual calibration.

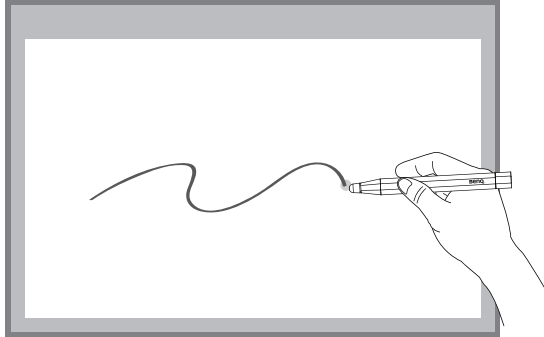


# Start for Interactive Function

After completing calibration, you can use PointWrite pen as mouse function or launch QWrite software for writing and annotation.

**Remark:**

\*QWrite™ is BenQ exclusive annotation software, please go to BenQ Website to Download QWrite software.



**Notice:**

1. To secure the quality of interactive function, we suggest users to adjust projector's input signal (computer output signal) to the same as projector's Native resolution.
2. If computer's output signal changed upon switching to different PC due to the output limitation of Graphic card, we suggest to install the set-up SW and redo the PointWrite Calibration.

# Specifications

Item	Description
<b>PointWrite</b>	
Model name	PW31U
Technology	Image Processing Technology
Refresh Rate	60 Hz
Response Time	Max 0.016 sec
Auto Calibration	Yes
Calibration Accuracy <sup>a</sup>	Max +/-2 Pixel
Operating Distance	Follow Projector Specification
Multi-User	10 pens simultaneously
Multiple Operation	2 Units
PC Connection	Mini USB
Power Source	PC USB Power
Max USB Cable Length	15 m (5 m USB cable + Repeater)
OS Supported	Windows: Win 8, 10, 11 Mac: 10.12 or later
Storage Temp/Humidity	-10°C ~ 60°C / 5%~95% RH (Max.)
Operating Temp/Humidity	5°C ~ 40°C / 10%~85% RH (Max.) non-condensing, inside projector
Dimensions	118.3 mm x 31.3 mm x 23.6 mm
Weight	45.0 g +/- 2 g
Compatible model	Selected BenQ Ultra short throw models (Throw ratio 0.35 and 0.33)
<b>PointWrite Pen</b>	
Power	AAA Battery*2
Length	164 mm
Diameter	16 mm
Weight	27 g (without batteries)
Color	Black

<sup>a</sup>. The accuracy of auto calibration will be impacted depending on your environment.