

# NEW RELEASES AT ISE2025

Barcelona, Spain – Ecler turns 60 and will be present as technology partner at the 21th edition of Integrated Systems Europe 2025, taking place in our home city Barcelona from February 4th to February 7th. Join us at Fira Barcelona.



# Ecler PLEX



EclerPLEX is an advanced AV digital platform designed to integrate EclerPLEX hardware devices and software tools, enabling the deployment of comprehensive systems that include programming, control, and integration with both Ecler and third-party devices.

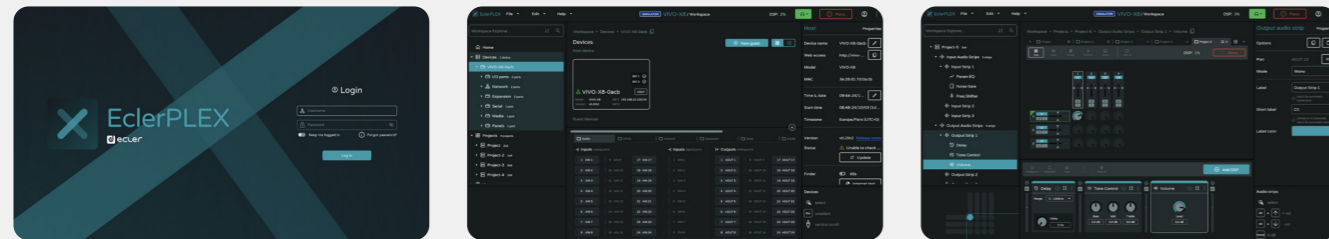
The platform features a flexible architecture that supports several types of project profiles (mixing matrix, automatic mixer matrix, priority and paging manager, AEC conference mixer, etc.) and also a custom sizing of them (examples: matrix sizes of 8x8, 2x8, 12x12, 10x24... etc.).

It allows users to also customize audio I/O strips in a modular way, using individual audio DSP blocks in a sequential arrangement.

Several projects can be run simultaneously, up to the maximum I/O global and DSP capabilities of the HW Host unit in use. The Host unit will be able to use Guest units resources in its projects through a regular LAN creating a mesh of EclerPLEX devices.

The platform is designed to be fast, flexible, and powerful, making it suitable for all types of applications.

# XPECT THE XTRA~ ORDINARY



- ↘ **Compatible with all OS**  
The platform does not require any specific software installation.
- ↘ **EclerCLOUD Ready**  
Allows for remote management and monitoring of the system.
- ↘ **Integration and Customization**  
Scripts for integration and customization of system behavior.
- ↘ **Scalability**  
The system can be expanded with additional devices to meet the needs of larger projects.
- ↘ **Advanced DSP**  
Provides high-quality audio processing capabilities in a user friendly way.
- ↘ **Mobile Application**  
Enables control of the system from a mobile device.
- ↘ **User-Friendly Design**  
Intuitive interface with support for multiple languages and dark/light mode.
- ↘ **Global Events**  
Centralized management of resources and events across the network.
- ↘ **Probe audio at any point**  
Re-listening of every channel at any point in the signal chain and allows users to probe audio and reuse it in other projects.

# VIVO-X8

# BIO-X8

VIVO-X8 is an EclerPLEX Host with 8 analogue and 8 Dante™/AES67 audio input ports, 8 analogue and 8 Dante/AES67 audio output ports, scalable thanks to two X-link ports. A BIO-X8 expansion unit can be connected to each X-link port. VIVO-X8 as a Host in an EclerPLEX project, can contain multiple projects running simultaneously and serve user panels.

BIO-X8 is an affordable expansion interface that can easily scale up an VIVO-X8 digital matrix, adding to its default size, 8 input and 8 output analogue audio ports, 8 GPI ports and 8 GPO ports. A maximum of 2 BIO-X8 units can be linked to the same VIVO-X8, reaching a maximum total of 24 analogue audio input ports, 24 analogue audio output ports, 24 GPIs and 24 GPOs control ports.



VIVO-X8	
Inputs	8 analogue + 8 Dante™/AES67
Outputs	8 analogue + 8 Dante™/AES67
Communication Interfaces	2x Ethernet + RS232 + 2x X-link
Remote control	8 GPI + 8 GPO ports protocol / User Control Panels / EclerPLEX

BIO-X8	
Inputs	8 analogue
Outputs	8 analogue
Communication Interfaces	X-link
Remote control	8 GPI + 8 GPO ports

# PULSO Series

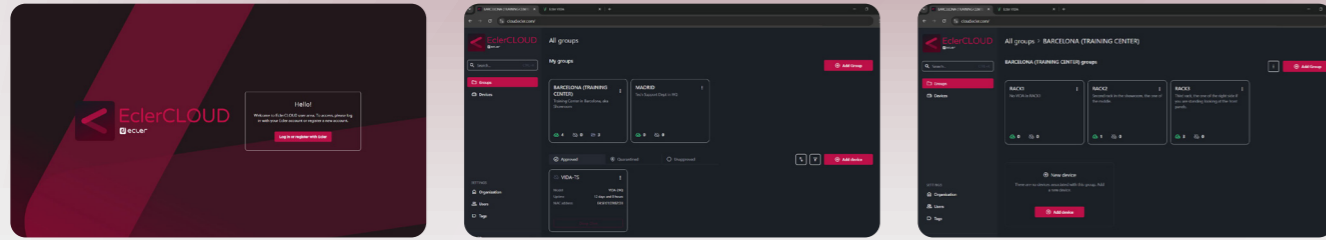
Ecler introduces its next generation of digital remote wall panels in 2025, featuring three different models with an elegant minimalistic design. The stunning PULSO panels, featuring aluminum frame and capacitive IPS display, are the perfect choice to load the different user panels from HUB, VIDA, HALO, EclerNet and EclerPLEX. Additionally, PULSO can be configured as a UCP Server in an EclerNet project. The three models of 4", 5.5" and 10" are single unit EU electrical wall box and can manage PoE or external power supply.



PULSO Series	PULSO-4	PULSO-6	PULSO-10
Screen dimension and resolution	4" Capacitive 480x480	5.5" Capacitive 720x1280	10" Capacitive 1280x800
Construction	Aluminium frame (compatible with Standard EU 1-unit electric wall box)		
DC power supply	POE and external VDC power supply (not included)		

# Ecler CLOUD

EclerCLOUD empowers you to monitor, manage, and control your entire Ecler VIDA & HALO Series of amplifiers, with unparalleled ease and precision.



## Real-time Monitoring Everything in Your Space

Keep an eye on your connected Ecler devices, ensuring optimal performance and proactive issue resolution.

## Customized Options

Tailor EclerCLOUD to your unique needs, creating a personalized experience that maximizes efficiency: groups, tags, smart search.

## Real-Time Alerts

Stay informed with instant notifications of any potential issues, allowing for proactive intervention.

## Data-Driven Insights

Leverage powerful analytics to optimize your AV operations and make informed decisions.

## Enhanced Control through Deep Dive

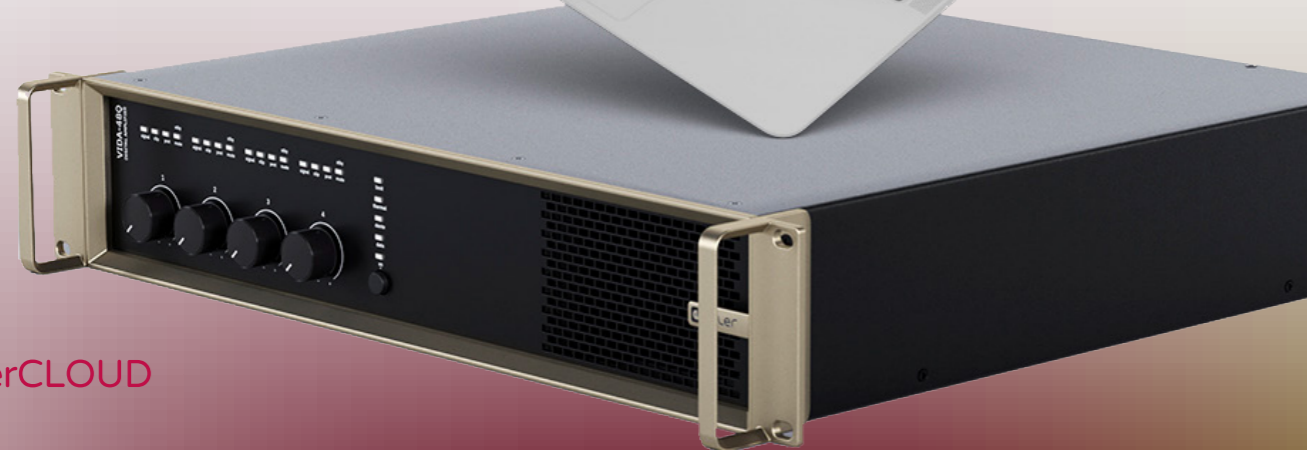
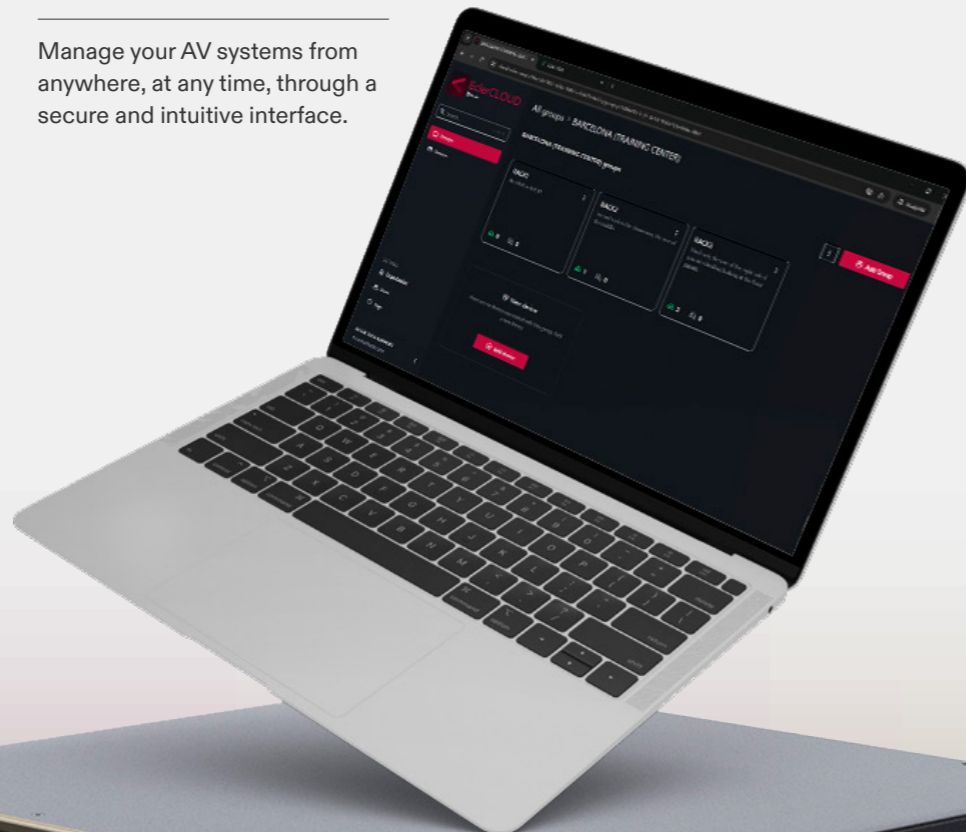
Gain insights into your AV infrastructure, enabling precise adjustments as if you were there.

## Remote Access

Manage your AV systems from anywhere, at any time, through a secure and intuitive interface.

## API for NOC System Integrators

The EclerCLOUD API allows software developers to interact with the Ecler platform easily.



# VIDA Series



The awarded **VIDA Series of Amplifiers** exemplifies Ecler's dedication to innovation, superior sound quality, versatility and sustainability. Pioneering VersaPower technology empowers users to effortlessly optimize their sound systems, users can customize their audio setup to meet the specific requirements of any installation in both high and low impedance lines.

The **VIDA Series** also offers a comprehensive range of connectivity options and advanced DSP options, ensuring compatibility with various audio sources and systems.

Analog and digital signals, calendar events, internal audio player and network connectivity via Ethernet and Dante™/AES67 protocol, the VIDA Series enables seamless integration into any audio setup, expanding its versatility and usability.

VIDA Series features managing capabilities including **Ecler VIDA App** to make both users and installers' lives easier, controlling several VIDA devices from the same app at the same time. The VIDA Web GUI Embedded Application available in 7 languages, eliminates the need for additional software installations, saving valuable time.

## VERSATILE INSTALLATION DIGITAL AMPLIFIERS

VIDA Series	VIDA-16Q	VIDA-24Q	VIDA-48Q
Inputs	4 analog input + 4 Dante™/AES67 Network Receivers + 1 embedded player + 1 embedded signal generator		
Outputs	4 Amplified Outputs   Independent Output mode selection Lo-Z/Hi-Z, 70V/100V, 4Ω/8Ω/2Ω + 2 Auxiliary Line Level Outputs   4 Dante™/AES67 Network Transmitters		
Max output power ASYMMETRICAL @ 4Ω Single Channel Driven @1kHz	1600W	2400W	2600W



# HALO Series



Ecler **HALO** is a series of multi-channel digital amplifiers with networked DSP. The line includes 2 and 4-channel models, all usable as High and Low Impedance and bridgeable to double the power. The built-in web interface allows easy programming and control of basic or advanced functions, thanks to different

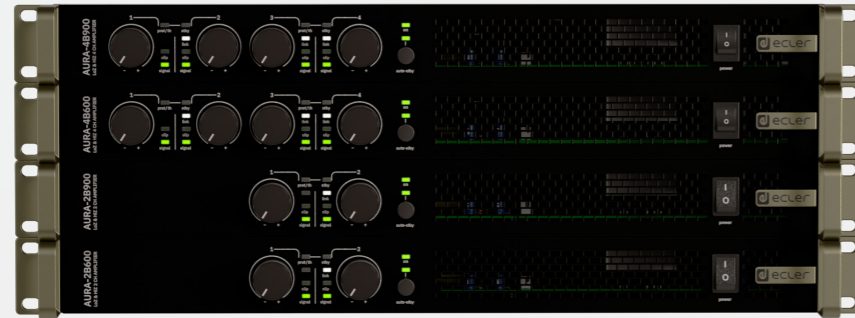
access levels. All models include a single Ethernet interface for setup, control and Dante™/AES67 protocol. Flexible end user control through customizable user panels, accessible via web GUI or mobile application.

HALO Series	HALO-2B300	HALO-4B150	HALO-4B300
Inputs	4 analog input + 2 Dante™/AES67 Network Receivers + 1 embedded player + 1 embedded signal generator	4 analog inputs + 4 Dante™/AES67 Network Receivers + 1 embedded player + 1 embedded signal generator	
Outputs	2 Amplified Outputs   Output mode selection by pairs Lo-Z/Hi-Z, 70V/100V, 4Ω/8Ω	4 Amplified Outputs   Output mode selection by pairs Lo-Z/Hi-Z, 70V/100V, 4Ω/8Ω	
Max output power @ 4Ω Single Output Driven @1kHz	300W	150W	300W



# AURA Models

**AURA amplifier series** expands in 2025 with four new models, offering compatibility with both LoZ and HiZ configurations and supporting dual or bridge mode (@4/8Ω). Designed for durability and long-lasting performance, these models feature advanced power supply circuitry optimized for efficient energy consumption. AURA Series also includes the option to link channels to the first input via a rear panel selector, as well as auto stand-by, overload and thermal protection, PFC, and an anti-clipping system. The front panel volume knobs can be locked using rear panel switches for added security.



AURA Models	AURA-2B600	AURA-2B900	AURA-4B600	AURA-4B900
Single Output @ 4Ω (RMS)	600W	900W	600W	900W
Single Output @ 8Ω (RMS)	300W	450W	300W	450W
Single Output @ 2Ω (RMS)	1100W	1500W	1100W	1500W
Single Output @ 100V (RMS)	550W	800W	550W	800W

# BOB Series

**BOB-22** is a 2x MIC/LINE inputs and 2 LINE outputs Dante Break Out Box. It allows taking up to 2 Dante™ channels from the Ethernet network and converting them to 2 analogue audio LINE level signals. It also allows taking up to 2 MIC/LINE analogue audio signals, convert them to 2 Dante™ channels and sent them to the Ethernet network.

**BOB-04** is a 4 LINE outputs Dante™ Break Out Box. It allows taking up to 4 Dante™ channels from the Ethernet network and converting them to 4 analogue audio LINE level signals.



Both features PoE (Power over Ethernet) DC supply directly from PoE ready Ethernet switches (external AC power supply available as an optional accessory).

Those new BOBs can be used with any audio device that needs Dante™ inputs and/or outputs, it's a perfectly complement an AURA or HADA power amplifier. Two units can be joined together with an optional accessory.



BOB Series	BOB-22	BOB-04
Inputs	2 MIC/LINE Bal. (Euroblock)	-
Outputs	2 Bal. (Euroblock)	4 Bal. (Euroblock)
Communication Interfaces	1 Ethernet (Dante™ audio & EclerNet)	



# AMBIT

**eAMBIT evolves into AMBIT** by adding new features and an 8-inch model to the loudspeaker series.

**AMBIT series** includes improvements like aluminum grilles for better durability, waterproof rubber connector covers for outdoor use in 16 and 18 models, and new sustainable packaging. Overall, the AMBIT series builds on the foundation of the eAMBIT series with upgraded components and additional features for improved performance and versatility.

AMBIT	AMBIT-13	AMBIT-16	AMBIT-18
RMS power / Peak power (8Ω)	25W / 100W	50W / 200W	70W / 280W
Woofers / tweeter	3,5" / 0,5"	6,5" / 1"	8" / 1,18" Dome Tweeter
Power selector @ 100V	2,5/5/7,5/15 W	5/7,5/15/30 W	7,5/15/30/60 W
SPL 1W/1m	87 dB	91 dB	90 dB



# eMOTUS Re-launch

In 2024, we reached a significant milestone: manufacturing our 100.000th **eMOTUS**. To celebrate this achievement, we have updated the Series. The series now includes the eMOTUS3OD, the reintroduced eMOTUS5P in black, and two new ceiling and floor accessories compatible with the 3" and 5" eMOTUS models. In 2025, we will also be adding new low-impedance eMOTUS model (16Ω) to the series.



eMOTUS	eMOTUS3OD	eMOTUS5P	eMOTUS5PB	eMOTUS5OD	eMOTUS5O16	eMOTUS8OD
RMS power / Peak power (8Ω)	25W / 100W	2 × 25W / 2 × 100W		40W / 160W	40W / 160W (16Ω)	100W / 400W
Power selector @ 100V	15/7,5/5/2,5 W	-	-	7,5/15/30 W	-	60/30/15/7,5/3,5 W
Audio inputs	Euroblock connector	2 ST LINE (bal. & unbal.)	2 ST LINE (bal. & unbal.) + BT	Euroblock connector	Euroblock connector	Euroblock connector
Others	IP65	Bass & treble EQ + ST/MONO switch	IR + Remote port + Bass & treble EQ + ST/MONO switch	IP65		

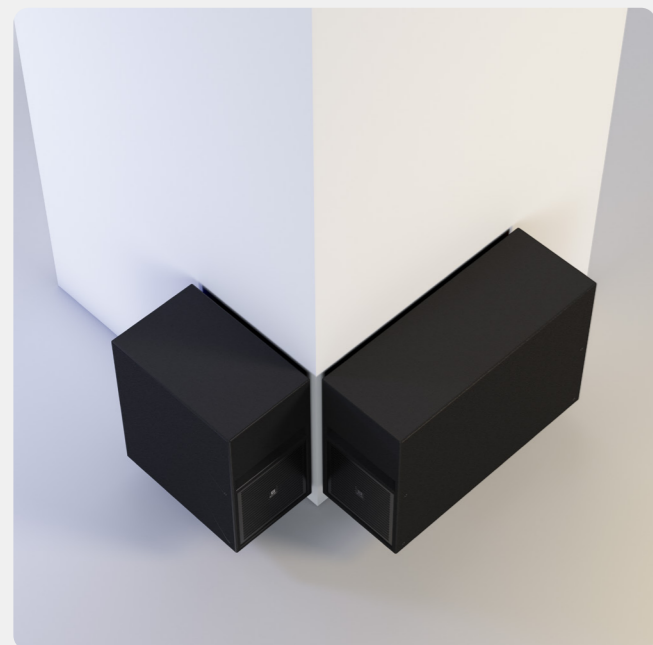
# EDGE

EDGE subwoofer is perfectly designed for small available spaces like underneath restaurant seats or wall-mounted in a corner with the included bracket. This powered subwoofer of 178 mm deep incorporates a 10" driver, 50Hz to 250Hz variable low pass filter, phase inverter and an amplified power output of 150W.



EDGE	EDGE-SB110P
Inputs	Unbalanced RCA Stereo, Balanced Euroblock mono
Amplifier Power Output (Powered)	150W @ THD < 0.5%
Features	Auto standby switch, Phase switch, Gain control

# POWERFUL BASS SOUNDS IN COMPACT SUBWOOFERS



## KICK Series

New **KICK subwoofer** in 2025! KICK-SB18 feature an 8" water resistant treated woofer and 18mm Plywood birch with Polyurea coating enclosure material. It delivers 350 WRMS at 8Ω ready to be wall-mounted with the included bracket or positioned vertically and horizontally when needed.

KICK-SB18 and KICK-SB28, launched in 2024, are Ecler's range of outdoor subwoofer loudspeakers.

KICK	KICK-SB18	KICK-SB28
RMS power / Peak power	350 W RMS / 1400 W Peak	700 W RMS / 2800 W Peak
Woofer	8"	2x8"
SPL 1W/1m	91 dB	92 dB
Nominal Impedance	8Ω	4Ω

# WiLD

Introducing **WiLD** by Ecler, the ultimate long-distance wireless audio solution! This innovative system includes the WiLD-TX transmitter, a sleek 4-inch WiLD-14 receiver loudspeaker, and a powerful WiLD-SB18 subwoofer. Designed for retail spaces, museums, and other markets, WiLD offers a cost-effective, robust, and user-friendly installation that blends seamlessly into any environment. Experience superior sound quality with minimal visual impact. Upgrade to WiLD today and transform your audio experience!

## WiLD-TX

**WiLD-TX** is the transmitter device that communicates with all the receiver devices to create a WiLD wireless network.



- **USB-C 5VDC Power Supply.**
- **2 audio inputs available:**
  - ↳ Analogue stereo, unbalanced. 2 x RCA connectors
  - ↳ Bluetooth®, class 1 (up to 25 meters range, maximum)
- **1 x WiLD wireless audio signal transmitted.**
- **MUTE port**, to allow the system's audio silencing when an external dry contact is closed.
- **REMOTE port**, to allow a simple general volume control for the end user with a WPaVOL or compatible wall panel.
- **Maximum number of receivers under control** pre transmitter device = 32 units.
- **Front panel 3 band EQ controls** and general volume control.
- **Recommended maximum range** from a WiLD-TX transmitter to any WiLD paired receiver: 50 mts indoors, 150 mts outdoors with direct line of sight.
- **Rear panel WiLD PAIR button:** it allows pairing the receivers to the transmitter quickly and easily.

WiLD-TX	
Inputs	IN1: Unbalanced, Stereo, RCA / BT: Bluetooth wireless
Outputs	WiLD Wireless OUT
Frequency Band	1880 - 1930MHz, EU DECT, US DECT

## WiLD-14

**WiLD-14** is a self-powered 4" lamp style loudspeaker with wireless audio reception under the control of the transmitter, featuring an installation system which is compatible with ceiling light rails.



WiLD-14	
Amplifier Power Output	40W @ THD < 1%
Woofer / tweeter	4" driver + 0,75" tweeter
Frequency Band	1880 - 1930MHz, EU DECT, US DECT

## WiLD-SB18

**WiLD-SB18** is a compact self-powered 8" subwoofer with wireless audio reception under the control of the transmitter.



WiLD-SB18	
Amplifier Power Output	100W @ THD < 1%
Woofer	8" woofer
Frequency Band	1880 - 1930MHz, EU DECT, US DECT

## SWC45

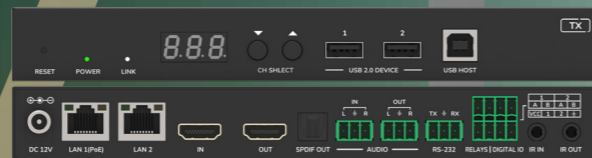
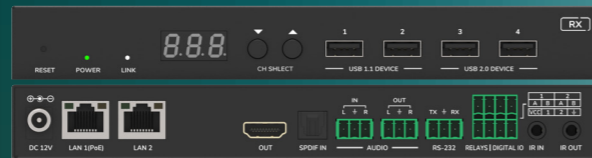
VEO-SWC45 is a professional 4K presentation and conferencing switcher designed for seamless connectivity via HDMI and wireless technologies. Supporting effortless collaboration, it features two HDMI video outputs with advanced screen management and a set of USB ports for integration with existing videoconference systems, including smart local camera switching capabilities. 1080p wireless presentation and conferencing are enabled through Chromecast, Miracast, Airplay, VEOShare app, and 4K wireless transmitter accessories VEO-SWC45TH and VEO-SWC45TU for HDMI and USB-C connections.



## XTI4D

## XRI4D

VEO-XTI4D transmitter and VEO-XRI4D receiver are professional JPEG2000 over IP extenders that enable secure HDMI distribution with 18Gbps bandwidth, supporting 4K 60Hz 4:4:4 video over 1Gb Ethernet networks, reaching distances up to 100 meters on a single Cat 5e or higher cable and a transmission latency of 1-2 frames. Equipped with dual RJ-45 ports, these units support independent or combined network configurations for Dante AV-A. Advanced video wall management up to a 9x9 configuration is also supported when paired with the VEO-XCTRL4D controller, along with additional control options.



## WPT11CG2

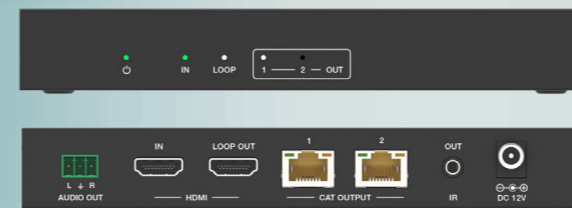
WPT11CG2 transmitter is a professional H.265 / H.264 device designed for HDMI distribution over 1Gb Ethernet networks, supporting resolutions up to WUXGA and 1080p. It delivers high-quality video compression over distances of up to 100 meters using a single Cat 5e or higher cable. Its wallplate design, featuring an HDMI input, RJ-45 port with PoE, and a reset button, provides an elegant solution for visible installations.



Control and configuration are managed via the built-in Web GUI or pairing it with the VEO-XCTRL2 controller, ensuring an easy setup and reliable performance.

VEO-SPS4 models are an 18Gbps HDMI splitters that allows an HDMI source signal to be distributed and extended to remote displays, supporting up to 4K 60Hz 4:4:4 video signals. It includes an HDMI loop output and two/four/eight main single Cat outputs, allowing for transmission distances of up to 35 meters for 4K/60Hz, 50 meters for 4K/30Hz, or 60 meters for 1080p over a single Cat 5e or higher cable. In addition, it supports one-way IR control signal pass-through, stereo unbalanced audio extraction on Euroblock connector, EDID management, and RS-232 serial control, making it a reliable and versatile solution for professional video distribution applications.

## SPS42



## SPS44

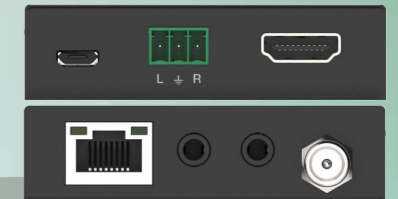


## SPS48



## XPS47

VEO-XPS47 is an HDMI 18Gbps extender kit that includes both a transmitter and a receiver. It enables 4K 50Hz 4:4:4 video signals to be extended up to 70 meters with zero latency over a single Cat 5e or higher cable.



## XPT412

VEO-XPT412 is a professional HDBaseT extension kit that includes both a transmitter and a receiver. Its 18 Gbps HDMI connectors allow for the extension of 4K video signals at 60Hz 4:4:4 up to 120 meters, or Full HD signals up to 150 meters, over a single Cat 5e or higher cable.



Made in Barcelona.  
Thinking forward.  
Products living  
forever. Ergonomics  
and design. Trustful  
service. A green  
brand.

**Ecler Proaudio S.L.**  
08040 Barcelona, SPAIN  
T. (+34) 932 238 400  
[www.ecler.com](http://www.ecler.com)  
[information@ecler.com](mailto:information@ecler.com)

**NEEC AUDIO DEUTSCHLAND GMBH**  
28359 Bremen, GERMANY  
T. (+49) 0421 - 98976170  
[www.neec-audio.de](http://www.neec-audio.de)  
[info@neec-audio.de](mailto:info@neec-audio.de)

