

REDSKAN mini™

Indoor / Outdoor RLS-2020S



The REDSCAN mini RLS-2020S is an IP/PoE laser scan detector for outdoor and indoor use, providing a detection area up to 20x20m (65 x 65 ft.) or up to 30m (100ft) radius 95° (with the extended range mode).

The RLS-2020S is a compact and highly customisable detector that helps protect in an unobstructed way, houses, buildings, controlled areas by creating an invisible laser wall or plane and detecting any intrusion breaching it.

For indoor applications, the RLS-2020S can be set up in high resolution mode which enables very small object detection; it can also be set up in "indoor throwing mode" allowing to detect an object been thrown into a controlled area.

In addition to dry contacts, the RLS-2020S generates unique REDWALL Event Codes that are already integrated with most Video Management Systems (VMS) and Physical Security Information Management (PSIM) platforms, allowing it to trigger events, camera pre-sets and tracking through zones.



EN 50131-1 Grades and Environmental Class:
Security Grade 3, Environment ClassII TS50131-2-11



FEATURES

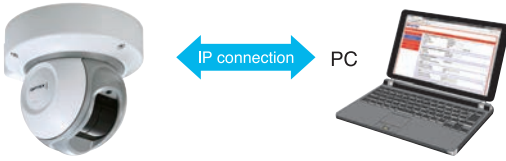
- 20m x 20m (65ft. x 65ft.), 95 degree detection area
- 30m (97.5ft) radius with 95 degree (range extension mode)
- Vertical and Horizontal detection modes
- Multi-angle Adjustment Shell Structure (M.A.S.S.)
- Unique detection algorithm
- Automatic area setting function
- Advanced area setting
- 4 adjustable detection areas on IP connection
- Total 3 outputs can be assigned for analog connection
- Supporting multiple network protocols.
- Anti-rotation, Anti-masking, Soiling, Trouble, Tamper, DQ outputs (Selectable)
- Compatible with Power over Ethernet
- Paintable housing
- Indoor and Outdoor use
- Indoor high resolution mode
- Indoor throw-in mode
- Area selection
- Environmental disqualification circuit (D.Q.)
- Integration to external devices and applications with REDWALL Event Code.

SPECIFICATIONS

Model	RLS-2020S
Installation location	Indoor/Outdoor
Detection method	Infrared Laser Scan
Laser protection class	Class 1
Power input	10.5 to 30 VDC, PoE (IEEE802.3 af/at compliant)
Current draw	500 mA max. (12 VDC), 250 mA max. (24 VDC), 6W max. (PoE)
Mounting method	Ceiling mount, Wall mount, Tripod mount, Pole mount (Option), Recess mount (Option)
Detection area	20 x 20 m, (approx. 65 x 65 ft.), 95 degrees / Detection range expansion enable radius max. 30 m (approx. 97.5 ft.), Arc 95 degrees
Detection range	Radius 1 to 21m (approx. 3.3 to 68 ft.) at 10% reflectivity
Detection resolution/Response time	0.25 degree / within 75msec to 15 minutes (for indoor mode and outdoor mode) 0.25 degree / within 25msec (for indoor throw-in mode), 0.125 degree / within 100msec to 15 minutes (for Indoor high resolution mode)
Mounting height(Vertical mode)	Indoor: 2 m (6.7 ft.) or higher Outdoor: 4 m (13 ft.) or higher (Recommended)
Communication port	Ethernet RJ-45 10BASE-T/100BASE-TX (Auto negotiation)
Network protocol	TCP/IP, UDP/IP, DHCP, DNS, HTTP, HTTPS, FTP, SNMPv1/v2c/v3, ICMP, ARP
Output	3 outputs, 28 VDC 0.2A max. N.O./N.C. Selectable (3 from Master alarm, Zone outputs, Trouble, Tamper, D.Q.)
Input	1 Non-voltage contact input
Alarm period	Approx. 2 sec delay timer
Operating temperature	-40 to 60 C degrees (-40 to 140 F degrees)
IP rating	IP66
Dimensions (HxWxD)	146 x 160 x 160 mm (5.8 x 6.3 x 6.3 inch)
Weight	1.0 kg (2.2 lb)

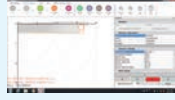
* Specifications and design are subject to change without prior notice.

EASY SETUP AND CONNECTION



PoE enabled Redscan mini generates Redwall Event Codes (REC) to all compatible VMS and NVR., through a single cable.

Detailed and complex area settings and configuration should be performed with the REDSCAN Manager software (supplied separately). Simpler detection areas can be set via the web browser.



INSTALLATION EXAMPLE

CEILING MOUNT



Multi-angle Adjustment Shell Structure allows flexible installation on ceiling or wall for vertical or horizontal detection area.

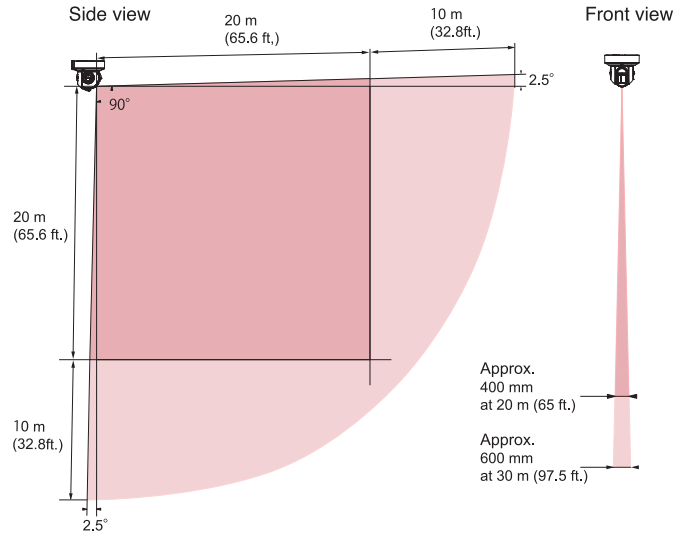
WALL MOUNT



OPTION
Optional Recess mount bracket RLS-RB



DETECTION AREA



Original detection range
Detection range expansion mode

APPLICATIONS



Art protection at Museum

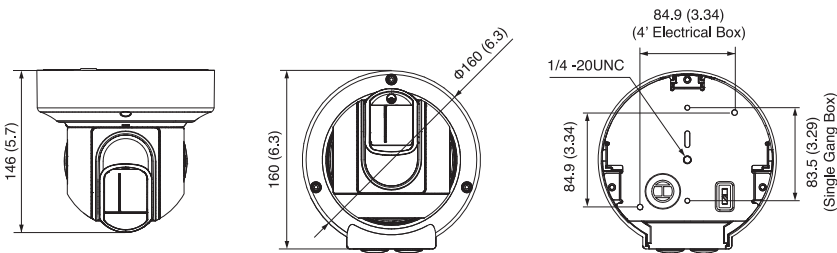


Protecting controlled areas



Wall protection (outdoor) at Warehouse

DIMENSIONS



Unit:mm(inch)

OPTION

LAC-1 : Laser Area Checker
 RLS-PB : Pole mount Bracket
 RLS-RB : Recess mount bracket
 RLS-LW : Laser Window



OPTEX CO., LTD. (JAPAN)

OPTEX EMEA HEADQUARTERS

OPTEX (EUROPE) LIMITED
 Unit 13, Cordwallis Park, Clivemont Road,
 Maidenhead, Berkshire, SL6 7BU, United Kingdom
 Tel: +44 (0) 1628 631 000
 Email: marketing@optex-europe.com
 www.optex-europe.com

OPTEX Technologies B.V. (Benelux)
 Tel: +31 70 4194100
 Email: info@optex.eu

OPTEX LOCAL OFFICES IN EMEA

Optex Security Sp. z o.o.
 (Eastern Europe / CIS countries)
 Tel: +48 (22) 598 06 60
 Email: optex@optex.com.pl

Optex Security SAS
 (France, North Africa)
 Tel: +33 (0) 4 37 55 50 50
 Email: contact@optex-security.com

FIBER SENSYS / OPTEX OFFICES IN THE MIDDLE EAST

Saudi Arabia Branch
 Tel: +966 535084140
 Dubai Branch
 Tel: +971 (0)45015394
 Email: contact@optex-fsi.com
 www.optex-fsi.com