

## 12/24V Power Supply and Large Enclosure

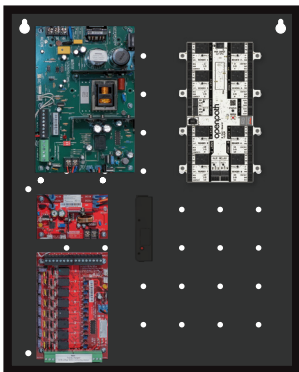
The LifeSafety Power E2 enclosure, FPV6 power supply, B100 secondary supply, and C8 output module provide flexible power for your custom Openpath Smart Hub configurations. The E2 enclosure comes with a custom mounting hole pattern and can fit one Access Control Core and up to three Openpath expansion boards. The FPV6 power supply can be used to output 24V to Openpath boards, while the B100 secondary supply makes 12V available as well. Use the C8 module to output 12V or 24V to power locks.



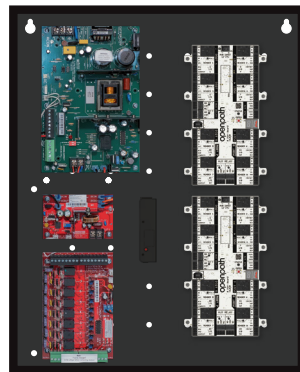
### Supported configurations

- **8 Smart Readers:** One Access Control Core and one 8-Port Board
- **16 Smart Readers:** One Access Control Core and two 8-Port Boards
- **10 Smart Readers and 16 Elevator Floors:** One Access Control Core, one 8-Port Board, and one 16 I/O Elevator Board
- **6 Smart Readers and 48 Elevator Floors:** One Access Control Core and three 16 I/O Elevator Boards

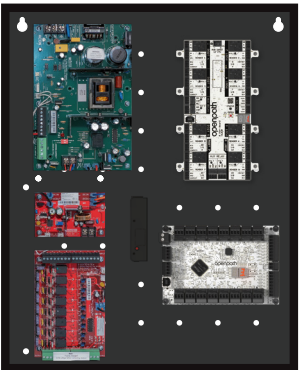
**Note:** Openpath Access Control Core and expansion boards sold separately. Please take note of power requirements for locking hardware; external power supply may be necessary.



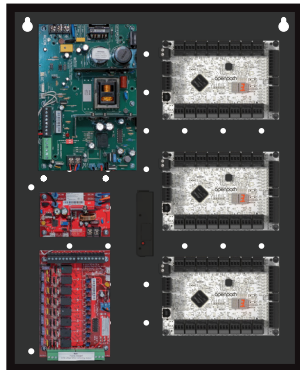
8 Smart Readers



16 Smart Readers



10 Smart Readers and 16 Elevator Floors



6 Smart Readers and 48 Elevator Floors

### Specifications

- **Input:**  
120/208/230VAC, 50/60Hz  
3.7 Amp max
- **FPV6 Outputs:**  
6A @ 24VDC  
Main output continuous or switched on FAI Input  
Auxiliary output 1.5 Amp class 2 power limited
- **B100 Output:**  
4 Amps @ 12VDC
- **C8 Outputs:**  
Selectable 12V or 24V per output  
Fused at 3A per output  
FAI per output
- **Enclosure Size:** 20" H, 16" W, 4.5" D (508 x 406 x 114 mm)
- **Weight:** Approx 20 lbs (9 kg)
- **Operating Temperature:** -4° to 122°F (-20° to 50°C)
- **Operating Humidity:** 5% to 85% relative, non-condensing
- **Backup Battery:** For 24V, use two 12VDC sealed lead acid (SLA) or gel cell batteries in series
- **Supervision:**  
AC fail, Battery fail, System fault (form "C")  
Low power shutdown when battery voltage too low
- **Fire Alarm Disconnect Activation:**  
DC voltage: 0 to 33VDC, 3 to 15mA  
Dry contact NO/NC  
Optional Fire Alarm latching
- **Visual Indicators:** AC On, DC Output, Fire Alarm activation
- **Compliance:** FCC, IC, CE, RCM, UL 294
- **Lifetime warranty**