

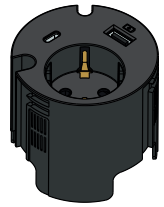
Powerdot

□ 935-PD16W

■ 935-PD16

POWER
dot

CONTENT:



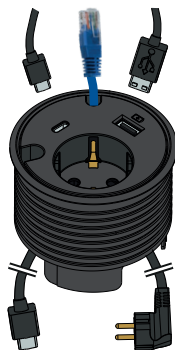
x1



x1



x1



- 1 **USB Charger QC2.0 (Type-A)**

- 1 **Schuko socket**
/w 1250 mm cable

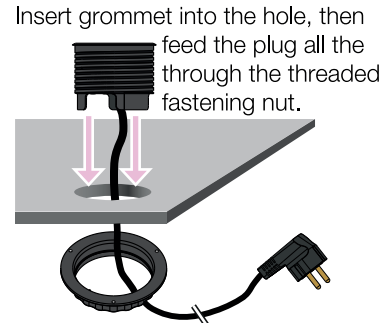
- 1 **USB Port (Type-C Female)**
/w 1000 mm cable

- 2 **feed-throughs**
(Ø7, Ø9.5 mm)

1 DRILL

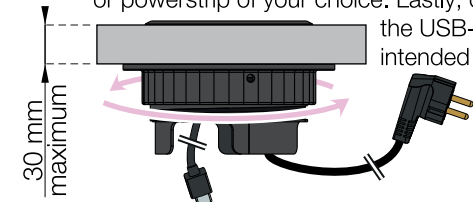


2 INSERT



3 TURN CLOCKWISE & PLUG IN

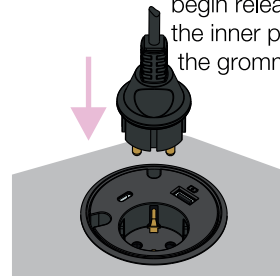
Turn the fastening nut as far up the thread as possible. Make sure that it has been thoroughly tightened. Plug the Schuko plug into a wall socket or powerstrip of your choice. Lastly, connect the USB-C cable to intended device.



Note! The fastening nut has 3 holes for fixing with wood screws.

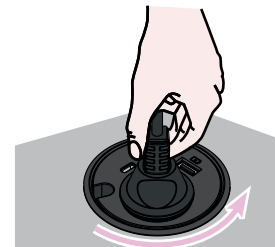
A ADJUSTING HEIGHT

Connect plug to Powerdot to begin releasing the inner part of the grommet.



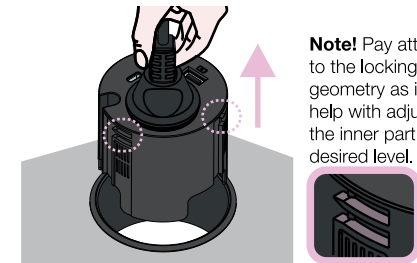
B RELEASE INNER PART

Rotate plug counter-clockwise to release the inner part.



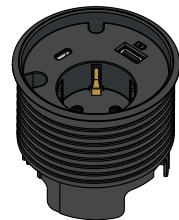
C ADJUSTING HEIGHT

The inner part should now be loose. Adjust to desired level - see box: ADJUST LEVELS



! ADJUST LEVELS

Level 2 must be used when combined with the decorative accessories.



LEVEL 1
0 mm / Flat

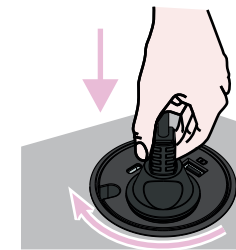
68

LEVEL 2
-6 mm / Sunk

74

D LOCKING POSITION

Rotate clockwise.



E LOCKING POSITION

Rotate clockwise.

