

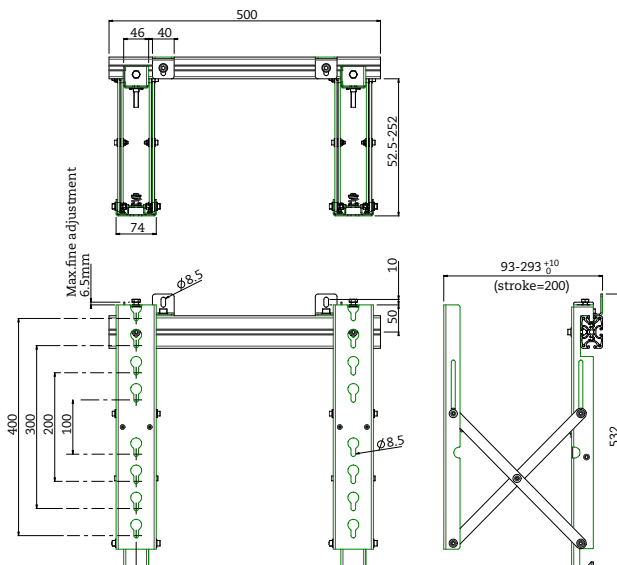
## VWM-02



The video wall solution with AG Neovo VWM-02 Push-To-Open mounting arms suits 42 to 65 inch displays for control rooms and digital signage applications.

The VWM-02, with loading capacity up to 80kg, offers the solution for the needs of narrow-bezel or seamless video wall mounting purpose. Designed with the Push-To-Open mounting function, the VWM-02 ensures to reduce the installation and service times in combination with the application of VWM-01 standard video wall mounting arms. To integrate two or more displays in rows, the VWM-01 mounting arms, WMA-01/02/03 aluminum extension bars and WMA-04 wall brackets can together be used with the VWM-02 to both eliminates the need for complicated measuring and calculations on screen spacers and enables in saving alignment time.

- > Modular mount for 1 to unlimited wall display configurations
- > Push-To-Open function for mounting flat screens into a recessed wall
- > Reduce service time with Push-To-Open function
- > Landscape or Portrait screen installation
- > Compatible with VESA standard (Max. 400 x 400 mm)
- > Additional VWM-01 mounting arms and extension bars available for fast and easy modular installation
- > Weight capacity: 80 kg



### Specifications

Mounting	Display	42" - 65" displays
	VESA Standard	Max. 400 x 400 mm
Loading	Weight Capacity	80 kg (176.4 lbs)
Adjustment	Up	3.25 mm
	Down	3.25 mm
	Left	24.5 mm
	Right	24.5 mm
Exterior	Material	Steel and Aluminium
	Colour	Black and Silver
Dimensions	Net (W x H x D)	500 x 532 x 93-293 mm (19.7" x 20.9" x 3.7" ~ 11.5")
	Packaging (W x H x D)	560 x 90 x 250 mm (22.0" x 3.5" x 9.8")
Weight	Product Weight	7.3 kg (116.09 lbs)
	Packaged Product Weight	
Packing	1 Carton	1 set
	1 Pallet	40 sets
Accessories	Supplied	User Manual, VWA-04 bracket (2pcs), Bolt M6 x 12 (4pcs), Bolt M8 x 14 (4pcs)